

JUNO-R3391

Embedded Motherboard Rockchip RK3399 ARM Quad-Core Processor

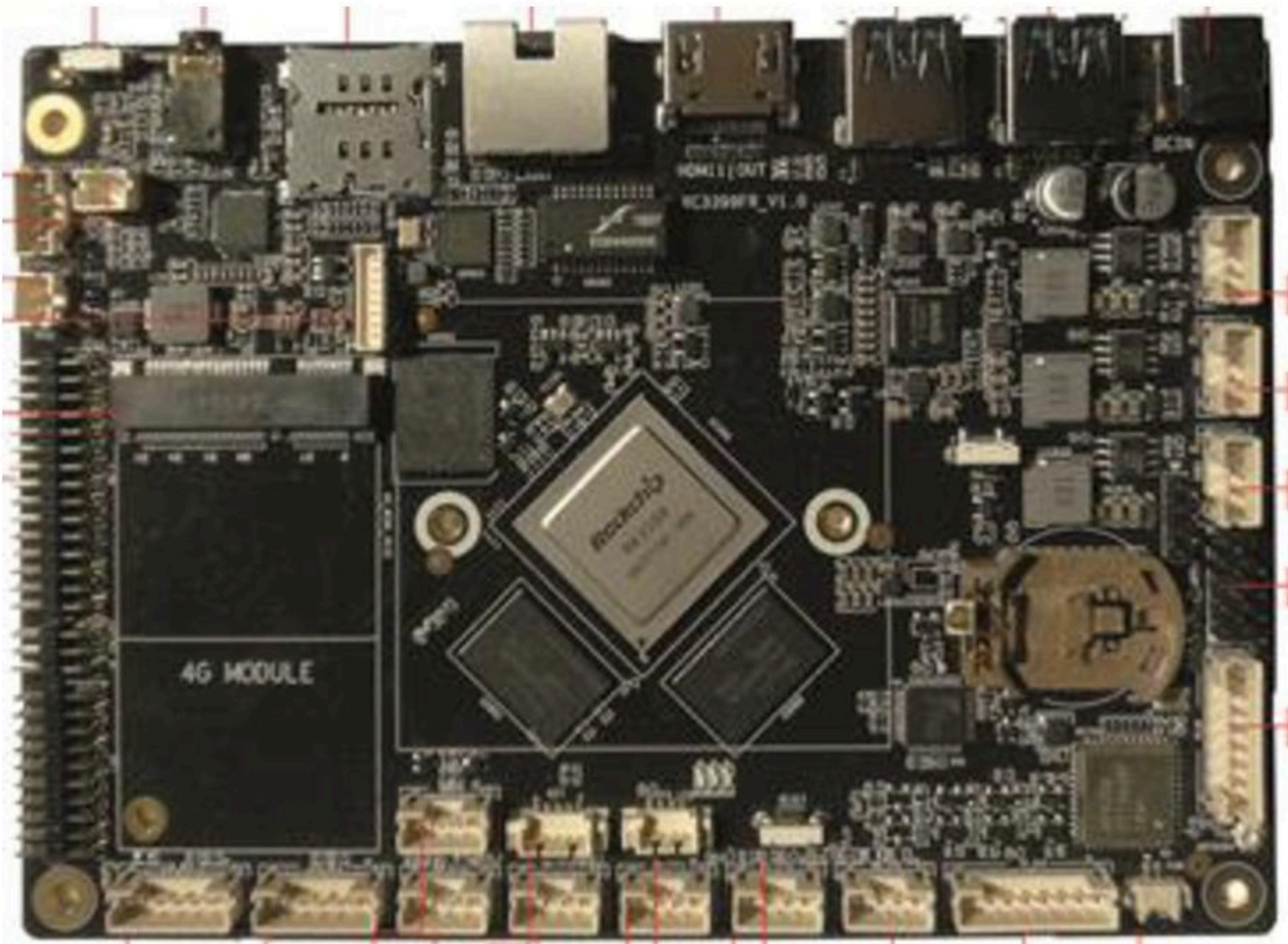
Features

- ◆ Rockchip RK3399 Dual-core Cortex-A72 + Quad-core Cortex-A53
- ◆ 6*COM, 6*USB, 6*GPIO
- ◆ HDMI/eDP/LVDS/MIPI-CSI/MIPI-DSI
- ◆ Support Dual display

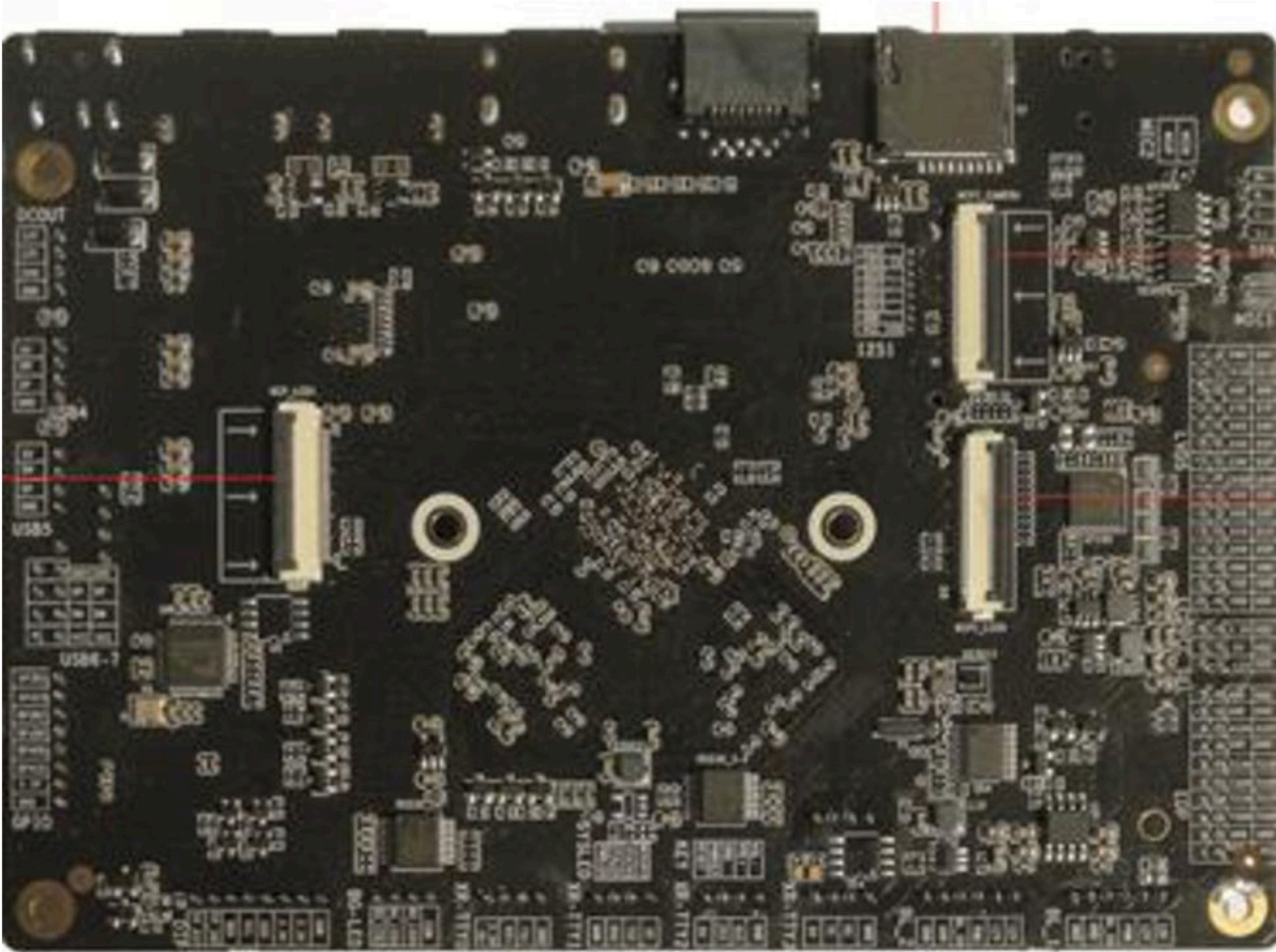
Specifications

CPU	RK3399 Dual-core Cortex-A72 up to 1.8GHz Quad-core Cortex-A53 up to 1.4GHz
MEMORY	2GB DDR3
Graphic Controller	Mali-T860
DISPLAY	1*HDMI
	1*eDP
	1*LVDS
	1*MIPI-CSI
	1*MIPI-DSI
LAN	1*RJ45(Gbps)
WIFI	2.4G/5G
BT	V2.1+EDR/BT3.0/3.0+HS/4.1/BLE (Optional)
Storage	16GB
AUDIO	1*3.5mm Audio jack(LINE-OUT)
	2*Mic in pin head
	1*SPK pin head—3W
COM	6*COM(5*RS232, 1*RS485)
Expansion Interface	1*mini-PCIe Slot
	1*TF Slot
	1*Micro SIM Slot
	4*USB2.0
	2*USB3.0
	6*GPIO
	1*Reset
Power	12V DC-IN
DIMENSIONS	145.2mm*104mm*15.2mm
OS	Android 7.1
ENVIRONMENTAL	Operation Temperature: -20~+80℃
	Storage Temperature: -40~+105℃

Top View



Bottom View



Dimensions

145.2mm*104mm*15.2mm