

JUNO-U141U

3.5" Embedded Motherboard Intel® Core™ Ultra Processor

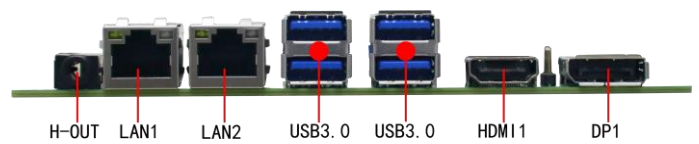
Features

- ◆ Intel® Core™ Ultra 3/5/7 CPU
- ◆ 2*LAN, 6*COM, 8*USB, 8*GPIO
- ◆ HDMI supports 4K resolution,
- ◆ 3.5" Compact Size

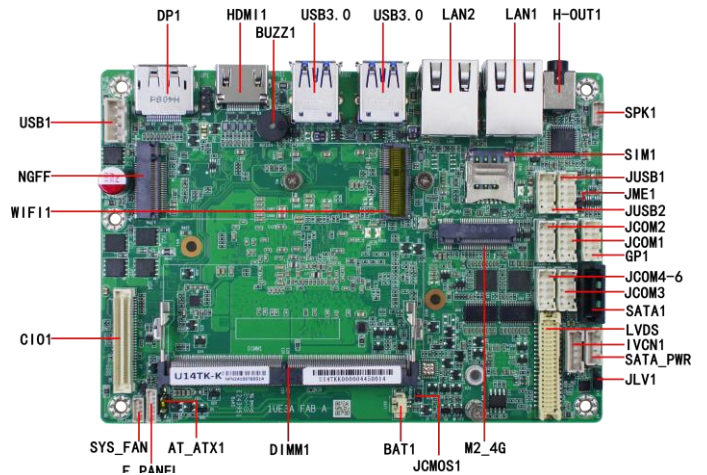
Specifications

CPU	Intel® Core™ Ultra 3/5/7 CPU
MEMORY	1*DDR5-4800MT/s SO-DIMM, up to 64GB
BIOS	SPI AMI EFI bios
DISPLAY	1*HDMI 2.0b, up to 4096x2304@60Hz
	1*DP1.4, up to 7680*4320@60Hz
LAN	1*LVDS/eDP up to 1920x1080@60Hz
	2*RJ45—Intel I210AT & I226LM②
AUDIO	1*H_OUT Audio jack
	1*SPK—5W
	1*F_AUDIO(MIC-IN&LINE-OUT) ③
SATA	1*SATA3.0
	1*M.2 2242/80 M-Key (SATA3.0/NVMe, default NVMe)
COM	6*COM④
Other	4*USB3.1, 4*USB2.0 pin header⑤
	8*GPIO
	1*M.2 2230 E-Key
	1*M.2 3042/52 B-Key
Power	9~36V DC in, 2PIN terminal, Co-lay XH2.5-4P
DIMENSIONS	146*102mm
OS	WIN10/WIN11
	Unix/Linux (Kernel 6.8 above)
ENVIRONME NTAL	Operation Temperature: -20~+60℃
	Storage Temperature: -40~+85℃
	Relative Humidity: 5~95%RH non- condensing

IO View



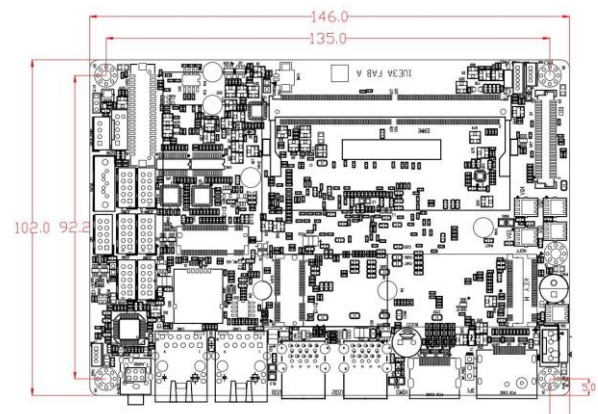
Top View



Bottom View



Dimensions



Remark

- ① Default LVDS, BOM change to support eDP;
- ② LAN1: Intel I226LM, 2.5Gbps; LAN2: Intel I210AT, 1Gbps
- ③ F_AUDIO co-lay with HP_OUT;
- ④ COM1 & 2 support BIOS switching RS232/422/485; COM 3-6: RS232
- ⑤ JUSB2 and CIO share a USB2.0 signal